

Middleburg High School- Bronco Classic 2026

3750 County Rd 220
Orange Park, FL 32068

Race Information

Time of Events:

6:00am – Gates Open, Packet Pickup at Home Concession Stand
7:00am – Coaches Meeting (On track, in front of concession stand)
7:30am – Boys Varsity Race (10 runners)
8:00am – Girls Varsity Race (10 runners)
8:35am – Boys JV Race (unlimited)
9:10am – Girls JV Race (unlimited)

Parking

Coaches and spectators, please park in the front parking lots on County Rd. 220. If the parking lot fills up, cars can park along the road in front of the school on CR 220. Buses can park in the bus loop on the west end of campus. Refer to the parking map for spectator and bus parking below.

Tickets

Tickets for spectators will be available on [Gofan.co](https://gofan.co). No cash payment.

Coaches- please share this link with your parents. They'll need to show their ticket on their phone. Printed tickets will not be accepted. Link will be provided.

Team Camps

Please see the included map for team camp locations- the tennis courts, home stands, visitor stands and area surrounding the visitor stands are the most advantageous locations being near bathrooms. Refer to the maps below.

Course Map

The course is the same as last year- 2 loops around campus with a loop around the practice field and finishing in the stadium. Please refer to the map below. Refer to the maps below.

Timing

Our meet will be timed by **Half-Mile Timing**, and live results will be available online at <http://live.halfmiletiming.com/>

Awards

We will not be having an awards ceremony at the conclusion of the meet. Teams may pick up their trophies and medals from the home concession stand (packet pickup area) after their races conclude.

MISCELLANEOUS POLICIES

-Spectators may spread out across the entirety of the course (except the track and football field) as long as they do not interfere with races in progress.

-Limited water will be provided post-race. Teams/athletes should bring their own hydration needs.

-A trainer will be on site **for emergencies only**. Trainer will **not** be taping up athletes before races, and the school will **not** be providing ice for minor ailments.

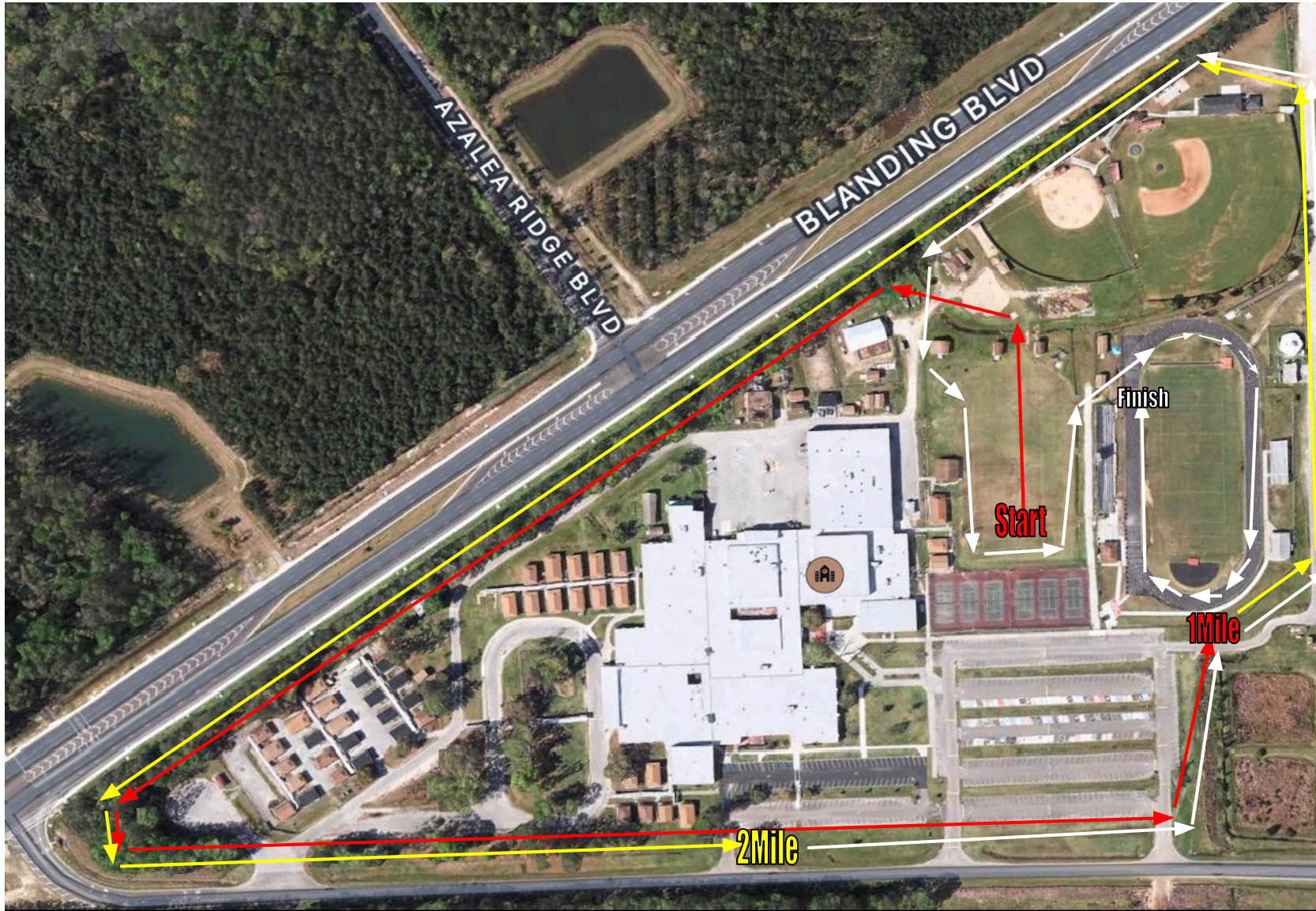
-**Only COACHES** should be on the track and infield of the football stadium. As athletes finish their races they will be directed out of the stadium and back to their team tent areas.

-Please prepare your athletes for potentially long lines at the restrooms. Both home and away restrooms will be open.

-Please remind your runners and spectators to be courteous of the competitors and volunteers throughout the morning. Other than the football field, we really don't restrict anyone from going anywhere on campus, but our volunteers will still need to be able to keep the course clear during the races.

Maps on the following pages-

Course Map:



Team Camp Map:



Parking Map:

